



**DIESEL SYSTEM PARTS**

**2022**

[www.cnrDiesel.com](http://www.cnrDiesel.com)



Firmamız 1972 yılında CINBAR OTOMOTİV adıyla kurulmuş olup, kuruluşumuzdan bu yana oluşturduğumuz güveni koruyarak müşterilerimize olan saygımız doğrultusunda ürettiğimiz güvenilir, verimli, kaliteli ürünlerle beklentileri karşılamak. Pazar payımızı ve rekabet gücümüzü artırmak ve bunları yaparken yurt içinde ve yurt dışında ülkemizin prestijini yükseltmek temel kalite politikamızdır. Firmamız dizel yakıt sistemleri alanında faaliyet göstermektedir. Genel olarak ürettiğimiz ürünler common rail valfler, ayar pulları, metrik valfler, avans pistonları, gaz milleri, enjektör ara parçaları, valf tutucuları burçlar rekor ve pul aksamlarıdır. Ürünlerimizi mevcut olan en ileri teknolojileri kullanarak mümkün olan en yüksek kalite ve hassasiyetle üretmekte ve yeni teknolojilere yatırım yapmaktadır.

- Faaliyet gösterdiğimiz alanlarda iletişimi sağlamak,
- Sorunları tespit edip çözüm yollarını oluşturmak ,
- Ülke ekonomisine katkıda bulunmak,
- Kaliteyi bir yaşam tarzı haline getirmek misyonumuzdur.

#### Vizyonumuz:

Hizmet verdiğimiz alanlarda kaliteyi yükseltmek, müşteri memnuniyetini ön planda tutmak, dünyadaki gelişimleri yakından takip ederek ülkemizde de uygulanmasını sağlamak, mesleğimizin ve sektörümüzün gelişmesine katkı sağlayacak çalışmalarda bulunmak.

Our firm Cinbar Automotive , which is founded in 1972, has the following guide-lines in its quality production policy

To manufacture high quality diesel fuel system elements with efficient performance which is proven in our domestic and international customers trust in our company for decades.

To reinforce the positive image of our companies products and to improve our market share inside and outside of our country

Combined with this policy, our high-tech machining skills allow us to manufacture a wide variety of precision parts like common rail valves and adjustment washers, metering valves and other kinds of fuel injection elements.

We are flexible in meeting our customer demands and manufacture according to the client documentation and designs with our technical facilities

All our products are manufactured with high quality and accuracy.

#### Our mission is:

- To be in touch with the market demands and production system
- To foresee and fix the problems and find the solutions
- To contribute to and benefit from the economic growth of our country
- To manufacture high quality products with reasonable price
- To "live" quality as our lifestyle

#### Our Vision is:

- To increase primarily quality & precision in production in order to gain the satisfaction of our clients.
- To keep up with the improvements in the world and to put them into practice.
- To be continuous in our strife for reaching the top in our branch.
- To improve the technological skills of our manufacturing line with the help of research and development.





Original Code : 7135-588  
CNR Code : 150 - 588  
Control Valve One Spring



Original Code : 7135- T 588  
CNR Code : 150 - T 588  
Control Valve Two Springs



INJECTOR CONTROL VALVE  
CNR Code : 150 - T 351  
Standart : 0,001 - 0,002 Hole Size



Original Code : 0 445 110 351  
INJECTOR CONTROL VALVE  
CNR Code : 150 - 351



Original Code : 0 445 110 418  
INJECTOR CONTROL VALVE  
CNR Code : 150 - 418



INJECTOR CONTROL VALVE  
CNR Code : 150 - T 418  
Standart : 0,001 - 0,002 Hole Size



Original Code : 7206 - 0460  
SMART INJECTOR VALVE  
CNR Code : 150 - 0460



CNR Code : 150 - 115  
0 445 115 XXX  
Bosch CR Piezo Enjektör Valf



CNR Code : 150 116-117  
0 445 116 XXX  
0 445 117 XXX Piezo Valf



INJECTOR HOLE DRILL  
0,11 mm 0,12 mm drill  
CNR Code : 600-110





Original Code : R 297  
CNR Code : 150 - 297  
Standart : 0,001 - 0,002 Hole Size



Original Code : R 831  
CNR Code : 150 - 831  
Standart : 0,001 - 0,002 Hole Size



Original Code : 043  
CNR Code : 150 - 043  
Standart : 0,001 - 0,002 Hole Size



Original Code : T 048  
CNR Code : 150 - 048  
Standart : 0,001 - 0,002 Hole Size



Original Code : 334  
CNR Code : 150 - 334  
Standart : 0,001 - 0,002 Hole Size



Original Code : R 158  
CNR Code : 150 - 158  
Standart : 0,001 - 0,002 Hole Size



Original Code : T 316  
CNR Code : 150 - 316  
Standart : 0,001 - 0,002 Hole Size



Original Code : T 010  
CNR Code : 150 - 010  
Standart : 0,001 - 0,002 Hole Size



Original Code : 056  
CNR Code : 150 - 056  
Standart : 0,001 - 0,002



CNR Code : 150 - 220  
6.995 - 7.090  
Ara Ölçüm : 0.005 mm  
Tetikleme : 0.025  
: 0.050  
: 0.075  
: 0.100  
: 0.125  
: 0.150



CNR Code: 150 - 222  
6.995 - 7.040  
Ara Ölçüm: 0.005 mm  
Tetikleme : 0.025  
: 0.050  
: 0.075



CNR Code : 150 - 224  
Renault Magnum Valf  
6.995 - 7.040  
Ara Ölçüm : 0.005 mm  
Tetikleme : 0.025  
: 0.050



Original Code : 9308-618C  
28239294 - NTD 28440421 - P  
CNR Code : 150 - 618C



Original Code : 9308-622B  
28239295 - NTD 28278897 - P  
CNR Code : 150 - 622B



CNR Code : 150 - 226  
Detroit Dizel Valf  
6.980 - 7.025  
Ara Ölçüm : 0.005 mm  
Tetikleme : 0.025  
: 0.050



CNR Code : 262-105  
 - Ø 15.80 x 10.40 mm  
 - 1.20 - 1.29 mm  
 - Ara Ölçüm 0.01 mm



CNR Code : 262-110  
 - Ø 22.80 x 19.55 mm  
 - 1.53 - 1.62 mm  
 - Ara Ölçüm 0.005 mm



CNR Code : 262-115  
 - Ø 23.80 x 18.05 mm  
 - 0.93 - 1.05 mm  
 - Ara Ölçüm 0.01 mm



CNR Code : 262-120  
 - Ø 5.40 x 3.40 mm  
 - 1.05 - 1.70 mm  
 - Ara Ölçüm 0.05 mm



CNR Code : 262-125  
 - Ø 2.30 mm  
 - 1.01 - 1.37 mm  
 - Ara Ölçüm 0.03 mm



CNR Code : 262-130  
 - Ø 23.65 x 19.05 mm  
 - 0.95 - 1.12 mm  
 - Ara Ölçüm 0.01 mm



CNR Code : 262-135  
 - Ø 5.50 mm  
 - 8.30 - 8.60 mm  
 - Ara Ölçüm 0.03 mm



CNR Code : 262-140  
 - Ø 4.20 x 2.30 mm  
 - 1.05 - 1.95 mm  
 - Ara Ölçüm 0.05 mm



CNR Code : 262-145  
 - Ø 23,80 x 19,00 mm  
 - 1.25 - 1.35 mm  
 - Ara Ölçüm 0.01 mm



Denso

CNR Code : 262-150  
 - Ø 4.00 x 1.75 mm  
 - 1.00 - 1.20 mm  
 - Ara Ölçüm 0.02 mm



CNR Code  
 Denso Valve  
 150 - 325 AA: Control Valve  
 150 - 325 AB: Control Valve  
 150 - 325 AC: 546 AC Ford, Citroen, Peugeot Boxer  
 150 - 325 AD: 0 95000 547X Isuzu Valve  
 150 - 325 AE: Toyota Hilux, Faraz



Denso

CNR Code : 262- 155  
 - Ø 24.25 x 21.50 mm  
 - 1.57 - 1.65 mm  
 - Ara Ölçüm 0.005 mm

# Common Rail Enjektör Valf Eşleştirme Listesi

| ORIGINAL VALVE CODE | CNR VALVE CODE | ORIGINAL VALVE SET CODE | INJECTOR NUMBER | INJECTOR NUMBER |               |
|---------------------|----------------|-------------------------|-----------------|-----------------|---------------|
| R 297               | 150-297        | F 00R J00 339           | 0 445 120 018   | 0 445 120 103   |               |
|                     |                |                         | 0 445 120 032   |                 |               |
| R 1287              | 150-297        | F 00R J00 399           | 0 445 120 009   | 0 445 120 019   |               |
|                     |                |                         | 0 445 120 010   | 0445 120 020    |               |
| R 297               | 150-297        | F 00R J00 399           | 0 445 120 014   | 0 445 120 084   |               |
|                     |                |                         | 0 445 120 015   | 0 445 120 085   |               |
| R 297               | 150-297        | F 00R J02 067           | 0 445 120 012   | 0 445 120 043   |               |
|                     |                |                         | F 00R J01 895   | 0 445 120 013   | 0 445 120 077 |
|                     |                |                         |                 | 0 445 120 016   | 0 445 120 089 |
|                     | 150-297        | F 00R J02 213           | 0 445 120 017   |                 |               |
| R 297               |                |                         |                 | 0 445 120 040   | 0 445 120 041 |
| R 297               | 150-297        | F 00R J00 420           | 0 445 120 011   |                 |               |
| R 1157              | 150-158        | F 00R J01 159           | 0 445 120 024   | 0 445 120 055   |               |
|                     |                |                         | 0 445 120 026   | 0 445 120 056   |               |
|                     |                |                         | 0 445 120 027   | 0 445 120 068   |               |
|                     |                |                         | 0 445 120 044   | 0 445 120 105   |               |
|                     |                |                         | 0 445 120 045   | 0 445 120 154   |               |
|                     |                |                         | 0 445 120 053   |                 |               |
| R 158               | 150-158        | F 00R J01 218           | 0 445 120 030   | 0 445 120 217   |               |
| R 1157              |                |                         | F 00R J02 466   | 0 445 120 061   | 0 445 120 218 |
| R 158               |                |                         |                 | 0 445 120 100   | 0 445 120 219 |
| R 1157              | 150-158        | F 00R J01 278           | 0 445 120 054   | 0 445 120 075   |               |
| R 158               |                |                         | 0 445 120 057   | 0 445 120 346   |               |
| P 1940              | 150-831        | F 00R J01 941           | 0 445 120 029   | 0 445 120 140   |               |
|                     |                |                         | 0 445 120 037   | 0 445 120 144   |               |
|                     |                |                         | 0 445 120 070   | 0 445 120 159   |               |
|                     |                |                         | 0 445 120 097   | 0 445 120 236   |               |
|                     |                |                         | 0 445 120 112   | 0 445 120 237   |               |
|                     |                |                         | 0 445 120 115   | 0 445 120 240   |               |
|                     |                |                         | 0 445 120 120   | 0 445 120 241   |               |
|                     |                |                         | 0 445 120 121   | 0 445 120 243   |               |
|                     |                |                         | 0 445 120 122   | 0 445 120 253   |               |
|                     |                |                         | 0 445 120 125   | 0 445 120 272   |               |
|                     |                |                         | 0 445 120 133   |                 |               |
| R 831               | 150-831        | F 00R J01 222           | 0 445 120 033   | 0 445 120 108   |               |
|                     |                |                         | 0 445 120 034   | 0 445 120 173   |               |
|                     |                |                         | 0 445 120 051   | 0 445 120 174   |               |
|                     |                |                         | 0 445 120 052   | 0 445 120 175   |               |
|                     |                |                         | 0 445 120 096   | 0 445 120 176   |               |
| R 1938              | 150-831        | F 00R J02 454           | 0 445 120 025   |                 |               |
| R 831               |                |                         |                 |                 |               |



# Common Rail Enjektör Valf Eşleştirme Listesi

| ORIGINAL VALVE CODE | CNR VALVE CODE | ORIGINAL VALVE SET CODE | INJECTOR NUMBER | INJECTOR NUMBER |
|---------------------|----------------|-------------------------|-----------------|-----------------|
| <b>R 288</b>        | <b>150-297</b> | <b>F 00R J02 130</b>    | 0 445 120 007   | 0 445 120 210   |
|                     |                |                         | 0 445 120 018   | 0 445 120 211   |
|                     |                |                         | 0 445 120 032   | 0 445 120 212   |
|                     |                |                         | 0 445 120 059   | 0 445 120 231   |
|                     |                |                         | 0 445 120 060   | 0 445 120 238   |
|                     |                |                         | 0 445 120 079   | 0 445 120 239   |
|                     |                |                         | 0 445 120 103   | 0 445 120 250   |
|                     |                |                         | 0 445 120 123   | 0 445 120 251   |
|                     |                |                         | 0 445 120 132   | 0 445 120 252   |
|                     |                |                         | 0 445 120 151   | 0 445 120 254   |
|                     |                |                         | 0 445 120 152   | 0 445 120 255   |
|                     |                |                         | 0 445 120 208   | 0 445 120 256   |
|                     |                |                         | 0 445 120 209   | 0 445 120 273   |
| <b>R 1157</b>       | <b>150-158</b> | <b>F 00R J01 451</b>    | 0 445 120 064   | 0 445 120 139   |
|                     |                |                         | 0 445 120 065   | 0 445 120 234   |
| 0 445 120 074       |                |                         | 0 445 120 246   |                 |
| 0 445 120 136       |                |                         | 0 445 120 362   |                 |
| 0 445 120 137       |                |                         | 0 445 120 363   |                 |
| 0 445 120 138       |                |                         |                 |                 |
| <b>R 1157</b>       | <b>150-158</b> | <b>F 00R J01 704</b>    | 0 445 120 110   | 0 445 120 245   |
| <b>R 158</b>        |                |                         | 0 445 120 141   |                 |
| <b>R 158</b>        | <b>150-158</b> | <b>F 00R J01 479</b>    | 0 445 120 066   | 0 445 120 067   |
| <b>R 158</b>        | <b>150-158</b> | <b>F 00R J01 683</b>    | 0 445 120 080   | 0 445 120 268   |
| <b>R 158</b>        | <b>150-158</b> | <b>F 00R J02 103</b>    | 0 445 120 134   | 0 445 120 297   |
| <b>R 158</b>        | <b>150-158</b> | <b>F 00R J02 235</b>    | 0 445 120 101   | 0 445 120 314   |
| <b>T 008</b>        | <b>150-056</b> | <b>F 00V C01 001</b>    | 0 445 110 003   | 0 445 110 034   |
|                     |                |                         | 0 445 110 004   | 0 445 110 035   |
|                     |                |                         | 0 445 110 005   | 0 445 110 045   |
|                     |                |                         | 0 445 110 006   | 0 445 110 046   |
|                     |                |                         | 0 445 110 009   | 0 445 110 069   |
|                     |                |                         | 0 445 110 010   | 0 445 110 070   |
|                     |                |                         | 0 445 110 011   | 0 445 110 071   |
|                     |                |                         | 0 445 110 012   | 0 445 110 072   |
|                     |                |                         | 0 445 110 014   | 0 445 110 073   |
|                     |                |                         | 0 445 110 015   | 0 445 110 074   |
|                     |                |                         | 0 445 110 024   | 0 445 110 093   |
|                     |                |                         | 0 445 110 025   | 0 445 110 094   |
| <b>T 010</b>        | <b>150-010</b> | <b>F 00V C01 003</b>    | 0 445 110 008   | 0 445 110 044   |
|                     |                |                         | 0 445 110 020   | 0 445 110 062   |
| <b>T 010</b>        | <b>150-010</b> | <b>F 00V C01 005</b>    | 0 445 110 021   | 0 445 110 086   |
|                     |                |                         | 0 445 110 022   | 0 445 110 146   |
|                     |                |                         | 0 445 110 056   |                 |
| <b>T 010</b>        | <b>150-010</b> | <b>F 00V C01 013</b>    | 0 445 110 057   |                 |
| <b>T 010</b>        | <b>150-010</b> | <b>F 00V C01 015</b>    | 0 445 110 059   |                 |

# Common Rail Enjektör Valf Eşleştirme Listesi

| ORIGINAL VALVE CODE | CNR VALVE CODE | ORIGINAL VALVE SET CODE | INJECTOR NUMBER | INJECTOR NUMBER |
|---------------------|----------------|-------------------------|-----------------|-----------------|
| V 043               | 150-043        | F 00V C01 022           | 0 445 110 084   | 0 445 110 141   |
|                     |                |                         | 0 445 110 087   | 0 445 110 184   |
|                     |                |                         | 0 445 110 102   |                 |
| V 043               | 150-043        | F 00V C01 033           | 0 445 110 091   | 0 445 110 279   |
|                     |                |                         | 0 445 110 092   | 0 445 110 283   |
|                     |                |                         | 0 445 110 185   | 0 445 110 306   |
|                     |                |                         | 0 445 110 186   |                 |
| V 043               | 150-043        | F 00V C01 034           | 0 445 110 109   | 0 445 110 145   |
|                     |                |                         | 0 445 110 110   | 0 445 110 160   |
|                     |                |                         | 0 445 110 127   | 0 445 110 178   |
|                     |                |                         | 0 445 110 144   |                 |
| V 043               | 150-043        | F 00V C01 043           | 0 445 110 047   | 0 445 110 130   |
|                     |                |                         | 0 445 110 048   | 0 445 110 266   |
|                     |                |                         | 0 445 110 049   |                 |
| V 043               | 150-043        | F 00V C01 044           | 0 445 110 064   | 0 445 110 126   |
|                     |                |                         | 0 445 110 101   | 0 445 110 290   |
| V 043               | 150-043        | F 00V C01 050           | 0 445 110 173   |                 |
|                     |                |                         | 0 445 110 221   |                 |
| T 048               | 150-048        | F 00V C01 038           | 0 445 110 083   |                 |
| T 056               | 150-056        | F 00V C01 045           | 0 445 110 095   | 0 445 110 107   |
|                     |                |                         | 0 445 110 096   | 0 445 110 108   |
|                     |                |                         | 0 445 110 099   | 0 445 110 120   |
|                     |                |                         | 0 445 110 100   | 0 445 110 121   |
|                     |                |                         | 0 445 110 103   | 0 445 110 151   |
|                     |                |                         | 0 445 110 104   | 0 445 110 152   |
|                     |                |                         | 0 445 110 105   | 0 445 110 170   |
|                     |                |                         | 0 445 110 106   | 0 445 110 171   |
| T 056               | 150-056        | F 00V C01 051           | 0 445 110 181   | 0 445 110 202   |
|                     |                |                         | 0 445 110 182   | 0 445 110 205   |
|                     |                |                         | 0 445 110 189   | 0 445 110 206   |
|                     |                |                         | 0 445 110 190   | 0 445 110 207   |
|                     |                |                         | 0 445 110 199   | 0 445 110 208   |
|                     |                |                         | 0 445 110 200   | 0 445 110 224   |
|                     |                |                         | 0 445 110 201   | 0 445 110 225   |
|                     |                |                         |                 |                 |
| T 334               | 150-334        | F 00V C01 334           | 0 445 110 183   | 0 445 110 316   |
|                     |                |                         | 0 445 110 260   | 0 445 110 322   |
|                     |                |                         | 0 445 110 309   | 0 445 110 331   |
|                     |                |                         | 0 445 110 310   |                 |
| T 334               | 150-334        | F 00V C01 336           | 0 445 110 213   | 0 445 110 287   |
|                     |                |                         | 0 445 110 243   | 0 445 110 391   |
| T 334               | 150-334        | F 00V C01 346           | 0 445 110 253   | 0 445 110 269   |
|                     |                |                         | 0 445 110 254   | 0 445 110 270   |
|                     |                |                         | 0 445 110 257   | 0 445 110 329   |
|                     |                |                         | 0 445 110 258   | 0 445 110 330   |



# Common Rail Enjektör Valf Eşleştirme Listesi

| ORIGINAL VALVE CODE | CNR VALVE CODE | ORIGINAL VALVE SET CODE | INJECTOR NUMBER | INJECTOR NUMBER |
|---------------------|----------------|-------------------------|-----------------|-----------------|
| 334                 | 150-334        | F 00V C01 347           | 0 445 110 255   | 0 445 110 319   |
|                     |                |                         | 0 445 110 256   | 0 445 110 320   |
| 332                 | 150-334        | F 00V C01 331           | 0 445 110 209   | 0 445 110 219   |
|                     |                |                         | 0 445 110 212   | 0 445 110 301   |
|                     |                |                         | 0 445 110 216   | 0 445 110 400   |
| 332                 | 150-334        | F 00V C01 352           | 0 445 110 274   | 0 445 110 299   |
|                     |                |                         | 0 445 110 275   | 0 445 110 300   |
|                     |                |                         | 0 445 110 277   | 0 445 110 308   |
|                     |                |                         | 0 445 110 278   | 0 445 110 327   |
| 334                 | 150-334        | F 00V C01 353           | 0 445 110 265   |                 |
| C 339               | 150-334        | F 00V C01 338           | 0 445 110 247   | 0 445 110 273   |
|                     |                |                         | 0 445 110 248   |                 |
| T 334               | 150-334        | F 00V C01 359           | 0 445 110 293   | 0 445 110 446   |
|                     |                |                         | 0 445 110 305   | 0 445 110 448   |
|                     |                |                         | 0 445 110 313   | 0 445 110 449   |
|                     |                |                         | 0 445 110 343   | 0 445 110 454   |
|                     |                |                         | 0 445 110 344   | 0 445 110 512   |
|                     |                |                         | 0 445 110 345   | 0 445 110 515   |
|                     |                |                         | 0 445 110 346   | 0 445 110 521   |
|                     |                |                         | 0 445 110 347   | 0 445 110 541   |
|                     |                |                         | 0 445 110 355   | 0 445 110 628   |
|                     |                |                         | 0 445 110 357   | 0 445 110 629   |
|                     |                |                         | 0 445 110 364   | 0 445 110 630   |
|                     |                |                         | 0 445 110 365   | 0 445 110 631   |
|                     |                |                         | 0 445 110 379   | 0 445 110 632   |
|                     |                |                         | 0 445 110 380   | 0 445 110 669   |
|                     |                |                         | 0 445 110 397   | 0 445 110 670   |
|                     |                |                         | 0 445 110 412   | 0 445 110 710   |
| 0 445 110 445       |                |                         |                 |                 |
| 316                 | 150-316        | F 00V C01 328           | 0 445 110 137   | 0 445 110 179   |
|                     |                |                         | 0 445 110 138   | 0 445 110 180   |
|                     |                |                         | 0 445 110 139   | 0 445 110 191   |
|                     |                |                         | 0 445 110 140   | 0 445 110 192   |
|                     |                |                         | 0 445 110 155   | 0 445 110 234   |
|                     |                |                         | 0 445 110 156   | 0 445 110 235   |
|                     |                |                         | 0 445 110 176   | 0 445 110 263   |
|                     |                |                         | 0 445 110 177   | 0 445 110 264   |
| T 316               | 150-316        | F 00V C01 315           | 0 445 110 136   | 0 445 110 259   |
|                     |                |                         | 0 445 110 188   | 0 445 110 271   |
|                     |                |                         | 0 445 110 220   | 0 445 110 282   |
|                     |                |                         | 0 445 110 239   | 0 445 110 285   |
| T 316               | 150-316        | F 00V C01 324           | 0 445 110 162   | 0 445 110 194   |
|                     |                |                         | 0 445 110 163   | 0 445 110 294   |
|                     |                |                         | 0 445 110 193   | 0 445 110 295   |



Original Code : 7123 - 490E  
CNR Code : 100 - 490E



Original Code : 7123 - 490E  
CNR Code : 100 - 490E  
Yağlama Kanallı / With Oil Channel



Original Code : 7123 - 930G  
CNR Code : 100 - 930G



Original Code : 7139 - 559 (AF)  
CNR Code : 100 - 559 (AF)



Original Code : 7139 - 559B (H)  
CNR Code : 100 - 559B (H)



Original Code : 7139 - 559D  
CNR Code : 100 - 559D



Original Code : 7139 - 559D  
CNR Code : 100 - 559D  
Yağlama Kanallı / With Oil Channel



Original Code : 7174 - 980A  
CNR Code : 100 - 980A



Original Code : 7180 - 321L  
CNR Code : 100 - 321L





Original Code : 7182 - 620A  
CNR Code : 100 - 620A



Original Code : 7182 - 620C  
CNR Code : 100 - 620C



Original Code : 7182 - 620G  
CNR Code : 100 - 620G



Original Code : 7182 - 621A  
CNR Code : 100 - 621A



Original Code : 7182 - 621C  
CNR Code : 100 - 621C



Original Code : 7182 - 621E  
CNR Code : 100 - 621E



Original Code : 7182 - 621J  
CNR Code : 100 - 621J



Original Code : 9002 - 290  
CNR Code : 100 - 290



Original Code : 9100 - 228  
CNR Code : 100 - 228



Original Code : 9100 - 397B  
CNR Code : 100 - 397B



Original Code : 9100 - 483  
CNR Code : 100 - 483



Original Code : 9100 - 886  
CNR Code : 100 - 886



CNR Code : 600-016 M  
Metrik Valf Delik Lepleme  
Aparatı



Original Code : 7123 - 299B  
CNR Code : 100 - 299B



Original Code : 7182 - 460A  
CNR Code : 100 - 460A

**Not: Tüm valf modellerinde  
Standart - 0,005 mm - 0,010 mm  
ölçüleri mevcuttur.**



## Enjektör İtici Pimler

## Injection Pressure Pin



Original Code : 2 433 120 127  
CNR Code : 180 - 127

Original Code : 2 433 120 128  
CNR Code : 180 - 128

Original Code : 2 433 124 376  
CNR Code : 180 - 376

Original Code : 2 433 124 379  
CNR Code : 180 - 379

Original Code : 2 433 124 380  
CNR Code : 180 - 380



Original Code : 2 433 124 388  
CNR Code : 180 - 388

Original Code : 2 433 124 446  
CNR Code : 180 - 446

Original Code : 2 433 124 137  
CNR Code : 180-137

Original Code : F 00Z B20 001  
CNR Code : 180-001

CNR Code: 180-487

## Unit Pump Valves

## Valve Holders



Original Code : 7206-0379  
CNR Code : 150-379



Original Code : 7135-486  
CNR Code : 150-486



CNR Code : 150-230  
486 Valve Spacer



Original Code : 090131 - 1091  
CNR Code : 200 1091

## Regülatör Ağırlıklar

## Regulating Weights



Original Code : 513250  
CNR Code : 300 250



Original Code : 7123 - 914E  
CNR Code : 300 914E



Original Code : 7177 - 209  
CNR Code : 300 209



Original Code : 1 467 010 054  
CNR Code : 300 054



Original Code : 7123 - 914G  
CNR Code : 300 914G



Original Code : 7135 - 487  
CNR Code : 160 - 487



Original Code : 7169 - 408  
CNR Code : 160 - 408



Original Code : 7169 - 453  
CNR Code : 160 - 453



Original Code : 2 430 136 031  
CNR Code : 160 - 031



Original Code : F 00Z Z20 003  
CNR Code : 160 - 003



Original Code : 2 430 136 085  
CNR Code : 160 - 085



Original Code : 2 430 136 145  
CNR Code : 160 - 145



Original Code : 2 430 136 166  
CNR Code : 160 - 166



Original Code : 2 430 134 023  
CNR Code : 160 - 023



Original Code : 2 430 136 202  
CNR Code : 160 - 202



Original Code : 2 430 136 212  
CNR Code : 160 - 212



Original Code : 2 431 610 058  
CNR Code : 160 - 058

# Gaz Milleri

# Throttle Control Shafts



Original Code : 7123 - 770A  
CNR Code : 140 - 770A



Original Code : 7123 - 770P  
CNR Code : 140 - 770P



Original Code : 7123 - 770D  
CNR Code : 140 - 770D



Original Code : 7177 - 828T  
CNR Code : 140 - 828T  
Standart, 0.03 -0.05 mm



Original Code : 1 463 161 366  
CNR Code : 140 - 366



Original Code : 1 463 161 596  
CNR Code : 140 - 596



Original Code : 1 463 162 041  
CNR Code : 140 - 041



Original Code : 9 461 610 267  
CNR Code : 140 - 267



Original Code : 1 463 162 111  
CNR Code : 140 - 111



Original Code : 1 463 162 209  
CNR Code : 140 - 209



Original Code : 1 463 162 250  
CNR Code : 140 - 250



Original Code : 1 463 162 264  
CNR Code : 140 - 264



Original Code : 2 423 002 014  
CNR Code : 145 - 014



Original Code : 1 423 002 080  
CNR Code : 145 - 080





Original Code : 1 463 104 464  
CNR Code : 120 - 464  
Standart ve 0.015 mm



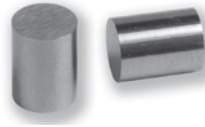
Original Code : 1 463 104 508  
CNR Code : 120 - 508  
Standart ve 0.015 mm



Original Code : 1 463 104 351  
CNR Code : 120 - 351  
Standart ve 0.015 mm



Original Code : 1 463 104 458  
CNR Code : 120 - 458  
Standart ve 0.015 mm



CNR Code : 125 - 001  
Standart, 0.005, 0.010 mm



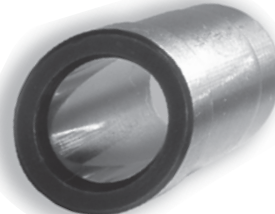
Original Code : 7123 - 15G  
CNR Code : 125 - 15G  
Standart, 0.005, 0.010 mm



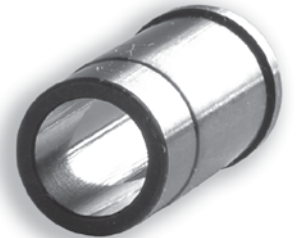
Original Code : 1 460 324 330  
CNR Code : 220 - 330  
Standart, 0.04, 0.07 mm



Original Code : 1 460 324 331  
CNR Code : 220 - 331  
Standart, 0.04, 0.07 mm



Original Code : 1 460 324 332  
CNR Code : 220 - 332  
Standart, 0.04, 0.07 mm



Original Code : 1 460 324 333  
CNR Code : 220 - 333  
Standart, 0.04, 0.07 mm



Original Code : 9101-040  
CNR Code : 125 - 040  
Standart ve 0.005 mm



Original Code : 7177 - 419C  
CNR Code : 125 - 419C



ISUZU Gaz Mili Burcu  
CNR Code : 220 - 002  
Standart ve 0.03 mm



Original Code : 5936-124  
CNR Code : 262-124  
Size: 1.60 ve 1.70 mm



Original Code : 1 460 100 356  
CNR Code : 262-356  
Size: 1.60 ve 1.70 mm



Original Code : 7174-85 D 1,50 mm  
7174-85 DE 1,55 mm  
7174-85 E 1,60 mm  
7174-85 EF 1,65 mm  
7174-85 F 1,70 mm



Original Code : 501150  
Ford Kargo Eksantrik Bilya Boşluk Pulu  
CNR Code : 262-150



Original Code : 501200  
Ford Kargo Ağırlık Pulu  
CNR Code : 262-200



Original Code : 501125 A  
Ford Kargo Eksantrik Faturalı Pul  
CNR Code : 262-125 A



Original Code : 2 430 100 XXX  
CNR Code : 261 100 XXX  
Ø 9.75 mm Enjektör Ayar Pulu  
1.00 - 2.00 mm  
Size: 0.05 mm



Original Code : 2 430 101 XXX  
CNR Code : 261 101 XXX  
Ø 8.50 mm Enjektör Ayar Pulu  
1.00 - 2.00 mm  
Size: 0.05 mm



Original Code : 2 430 102 XXX  
CNR Code : 261 102 XXX  
Ø 11.50 mm Enjektör Ayar Pulu  
1.00 - 2.00 mm  
Size: 0.05 mm



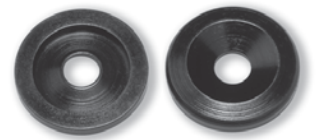
Original Code : 2 430 103 XXX  
CNR Code : 261 103 XXX  
Ø 7.15 mm Enjektör Ayar Pulu  
1.00 - 2.00 mm  
Size: 0.05 mm



Original Code : 1 460 100 677'den 720 arası  
CNR Code : 260 - 677'den 720 arası



Original Code : 7123-698  
Kafes Pulu  
CNR Code : 262-698



Enjektör Duman Pulu  
Audi - Volkswagen  
CNR Code : 262-101



Original Code : 1 417 413 047  
CNR Code : 240 - 047



Original Code : 9002-093A  
CNR Code : 240 - 093A



Makina Tazzik Rekoru  
CNR Code : 240 - 009



Original Code : 7123-339  
CNR Code : 240 - 339



Original Code : 7180-357 K  
CNR Code : 240 - 357 K



Original Code : 7180-358  
CNR Code : 240 - 358



Original Code : 2 433 456 035  
CNR Code : 240 - 035  
Metrik 8x1 Diş



Original Code : 7008 - 188  
CNR Code : 240 - 188



Original Code : 7008 - 188 A  
CNR Code : 240 - 188 A



Original Code : 7008 - 332  
CNR Code : 240 - 332



Original Code : 2 433 456 034  
CNR Code : 240 - 034  
Metrik 6x1 Diş



Original Code : 7123 - 351 B  
CNR Code : 240 - 351 B



Original Code : 7123 - 352 B  
CNR Code : 240 - 352 B



Original Code : 7123 - 975  
CNR Code : 240 - 975



Original Code : 7182-923  
CNR Code : 600-923



## Diğer Parçalar

## Other Parts



Original Code : 502978  
CNR Code : 600 - 978  
Standart ve 0.02 mm



Original Code : 508200  
CNR Code : 600 - 200



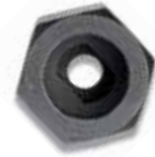
Original Code : 515354  
CNR Code : 600 - 354



DPC K. Vida Sökme Anahtarı  
CNR Code : 600-011



EDC M.A. Anahtarı  
CNR Code : 600-014



DPA K. Vida Sökme Anahtarı  
CNR Code : 600-010

## Yay Aksamları

## Springs



Original Code : 1 467 010 352  
CNR Code : 280 - 352



Original Code : 1 467 010 410  
CNR Code : 280 - 410



Original Code : 1 467 010 411  
CNR Code : 280 - 411



Original Code : 1 467 010 495  
CNR Code : 280 - 495



Original Code : 9 461 612 351  
CNR Code : 280 - 351



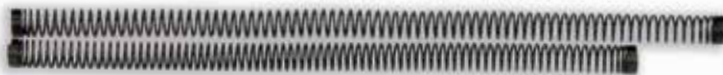
Original Code : 9 464 613 012  
CNR Code : 280 - 012



Original Code : 7177 - 421B  
CNR Code : 280 - 421B



Original Code : 515372-5  
CNR Code : 280 - 372-5



Original Code : 7123-83  
CNR Code : 280 - 83



Original Code : 1 463 461 306  
CNR Code : 600 - 306



Original Code : 146421-0020  
CNR Code : 600 - 0020



Original Code : 2 463 452 001  
CNR Code : 600 - 001



Original Code : 7135-76D  
CNR Code : 600 - 76D



Original Code : 7182-378  
CNR Code : 600 - 378



Original Code : 7182 - 26  
CNR Code : 600 - 26



Eksantrik Tabla Pimi (3.5 mm)  
CNR Code : 600 - 101



Eksantrik Tabla Pimi (4 mm)  
CNR Code : 600 - 101



Stop Tel Başlığı  
CNR Code : 600 - 007



Diamond Alıştırma Macunu  
CNR Code : 600 - 013  
3 Micron Green  
6 Micron Yellow



CNR Code: 601-019  
Cbn Diamond Steel Plate  
Plate Diameter: 10x20 cm  
Size: 200-400-600-800-1000-1200

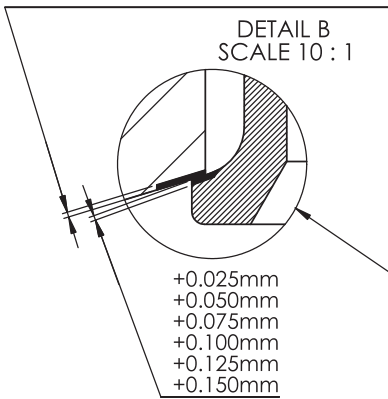
# Birim Pompa Valf İmalat Listesi

| 150-220 | +0.025 TETİKLEME | +0.050 TETİKLEME | +0.075 TETİKLEME | +0.10 TETİKLEME | +0.125 TETİKLEME | +0.15 TETİKLEME  |
|---------|------------------|------------------|------------------|-----------------|------------------|------------------|
| 6.995   | X                | X                |                  |                 |                  |                  |
| 7.000   | X                | X                | X                |                 |                  |                  |
| 7.005   | X                | X                | X                | X               | X                | X                |
| 7.010   | X                | X                | X                | X               | X                | X                |
| 7.015   | X                | X                | X                | X               | X                | X                |
| 7.020   | X                | X                | X                | X               | X                | X                |
| 7.025   | X                | X                | X                | X               | X                | X                |
| 7.030   |                  | X                | X                | X               | X                | X                |
| 7.035   |                  | X                | X                | X               | X                | X                |
| 7.040   |                  | X                | X                | X               | X                | X                |
| 7.045   |                  | X                | X                | X               | X                | X                |
| 7.050   |                  | X                | X                | X               | X                | X                |
| 7.055   |                  | X                |                  |                 |                  |                  |
| 7.060   |                  | X                |                  |                 |                  |                  |
| 7.065   |                  | X                |                  |                 |                  |                  |
| 7.070   |                  | X                |                  |                 |                  |                  |
| 7.075   |                  | X                |                  |                 |                  |                  |
| 7.080   |                  | X                |                  |                 |                  |                  |
| 7.085   |                  | X                |                  |                 |                  |                  |
| 7.090   |                  | X                |                  |                 |                  |                  |
| 150-222 | +0.025 TETİKLEME | +0.050 TETİKLEME | +0.075 TETİKLEME |                 |                  |                  |
| 6.995   |                  | X                |                  |                 |                  |                  |
| 7.000   | X                | X                | X                |                 |                  |                  |
| 7.005   | X                | X                | X                |                 |                  |                  |
| 7.010   | X                | X                | X                |                 |                  |                  |
| 7.015   | X                | X                | X                |                 |                  |                  |
| 7.020   | X                | X                | X                |                 |                  |                  |
| 7.025   | X                | X                | X                |                 |                  |                  |
| 7.030   |                  | X                | X                |                 |                  |                  |
| 7.035   |                  | X                | X                |                 |                  |                  |
| 7.040   |                  | X                | X                |                 |                  |                  |
| 150-224 | +0.025 TETİKLEME | +0.050 TETİKLEME |                  | 150-226         | +0.025 TETİKLEME | +0.050 TETİKLEME |
| 7.000   | X                | X                |                  | 6.980           | X                | X                |
| 7.005   | X                | X                |                  | 6.985           | X                | X                |
| 7.010   | X                | X                |                  | 6.990           | X                | X                |
| 7.015   | X                | X                |                  | 6.995           | X                | X                |
| 7.020   | X                | X                |                  | 7.000           | X                | X                |
| 7.025   | X                | X                |                  | 7.005           | X                | X                |
| 7.030   |                  | X                |                  | 7.010           | X                | X                |
| 7.035   |                  | X                |                  | 7.015           | X                | X                |
| 7.040   |                  | X                |                  | 7.020           | X                | X                |
|         |                  |                  |                  | 7.025           | X                | X                |

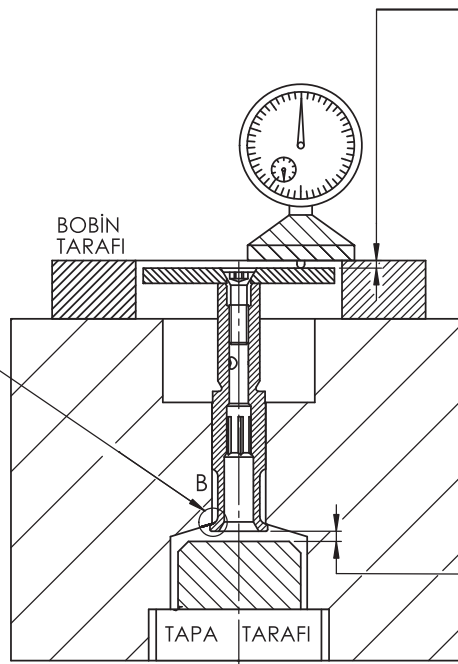
Detail B'de görünen pompa yüzeyinden aşınma miktarına göre taşlama yapıp yüzeyin 30 ile 50 kat büyüterek yırtıkların gittiğinden emin olunmalıdır. CNR Valflerde taşlama telafisi farklı tetiklemeli valfler ile ayarlanıp alt ve üst tetikleme mesafeleri taşlama oranına göre yerine gelir ve yakıt miktarları orijinali ile aynı olur.

Tüm pompalar için bobin tarafı tetikleme mesafesi : 0.11 - 0.12 mm arasıdır. Yakıt miktarını yüksek tutmak için 0.09 mm kadar düşülebilir. Tolerans Aralığı : 0.09 - 0.12 mm arasıdır. Bobin tarafının ölçümünü yaparken tapayı çıkarıp valfin kapatma noktasında parmağınız ile bastırıp ölçüm yapılır. Ölçüm yaparken plaka ve valfin yüzey temizlikleri çok önemlidir.

Pompanın yuvasında aşınma miktarına göre taşlama operasyonu yapılır.



Taşlama miktarına göre ayarlı + tetiklemeli valfler Valf aralıkları 6.995 mm ile 7.090 mm arası 0.005mm ara ile yapılmıştır. Pompa deliğine valfi takarken bir üst valfi master gibi kullanarak farklı valfin yerine girmediğinden emin olunmalıdır. Orijinal valf ile pompa gövdesi arasında boşluk toleransı : 0.003 ile 0.005 mm arasıdır.

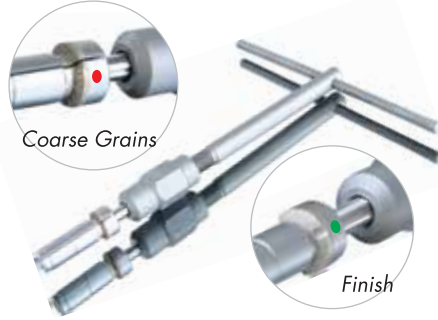


Scania, Volvo, DAF, İveco grubunda Tapa tarafı orijinal değeri : 0.15 mm dir. Tolerans Aralığı 0.14 mm ile 0.18 mm arasıdır.

Tapa tarafı boşluk toleransı Mercedes grubunda orijinal : 0.12 mm dir. Tolerans Aralığı : 0.11mm ile 0.15mm dir.



CNR Code : 600-019  
Birim pompa tapa kısmı  
tetikleme ölçüm saati.



CNR Code : 600-015  
Yuva Lepleme Aparatı



CNR Code : 600-016  
Delik Lepleme Aparatı



CNR Code : 601-018  
Birim pompa manyetik bobin  
kısmı tetikleme ölçüm saati.



CNR Code : 601-015  
Yuva taşlama burcu.  
Green : Finish  
Red : Coarse Grains  
Orange : Extra Coarse Grains



CNR Code : 601-015 D  
Detroit diesel slot grinding



CNR Code : 601-015 D  
Detroit diesel slot grinding



CNR Code : 601-016  
Delik lepleme burcu.



CNR Code : 601-016 D  
Detroit diesel hole lapping



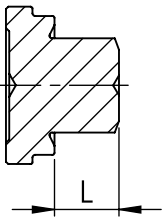
CNR Code : 150 - 225  
Yakıt Ayar Tapası  
Ara Ölçüm : 0.02 mm



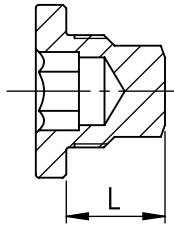
CNR Code : 150 - 235  
Yakıt Ayar Tapası  
Ara Ölçüm : 0.02 mm



CNR Code: 150-340  
Yakıt Ayar Plaka  
Size: 3.83-3.98 mm  
Ara Ölçüm : 0.01 mm



9.50mm  
9.52mm  
9.54mm  
9.56mm  
9.58mm  
9.60mm  
9.62mm  
9.64mm  
9.66mm



14.70mm  
14.72mm  
14.74mm  
14.76mm  
14.78mm  
14.80mm  
14.82mm  
14.84mm  
14.86mm



CNR Code: 150-005  
Unit pump camshaft  
pulley  
Birim Pompa Eksantrik  
Makarası



CNR Code: 600-018  
Manyetik Kompratör  
Birim pompa tapa kısmı  
tetikleme ölçüm ayağı.





CNR Code : 600-030  
10X Zoom\*4=40 Kat Büyütme



CNR Code : 600-017  
Su Geçirmez Mikrometre



CNR Code : 600-042  
Birim Pompa Aparat Mafsalı



CNR Code : 600-022  
Mikrometre Bağlantı Ayağı



Birim Pompa Valf Taşlama Seti (Kısa Model)

CNR Code : 600 - 035 S



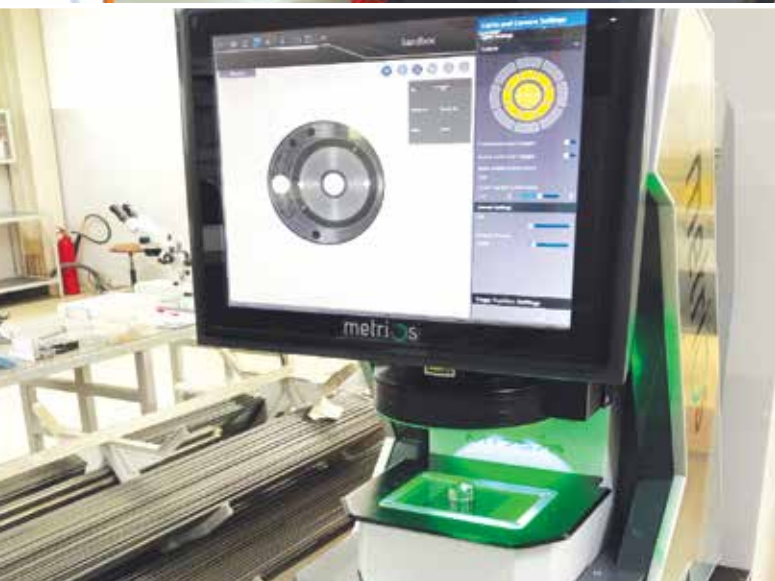
Detroit Dize Birim Pompa Valf Taşlama Seti

CNR Code : 600 - 035 S



CNR Code : 600 - 045  
Mafsalı, Çift Şarjlı, 450/1650 dk. Çift Devirli  
Hızlı Birim Pompa Yuva Taşlama Makinası









**CINBAR OTOMOTİV SANAYİ TAAH. ve TİC. LTD. ŞTİ.**

D.O.S.B. İmes San. Sit. E Blok 501 Sk. No:31  
Y. Dudullu 34776 Ümraniye-İstanbul/TÜRKİYE  
Tel: +90 216 415 40 40 / +90 216 335 18 04  
Faks: +90 216 415 40 90

info@cnrdiesel.com - cnr@cnrdiesel.com - www.cnrdiesel.com